



**HANSSY SHIPPING**

**M. V. HAN REN**  
**(HONG KONG 2012)**

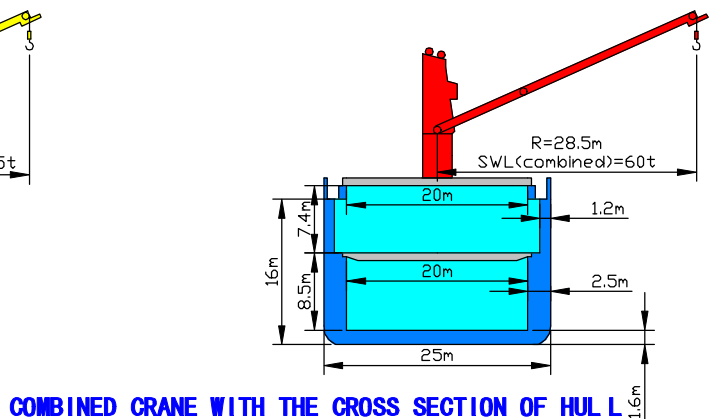
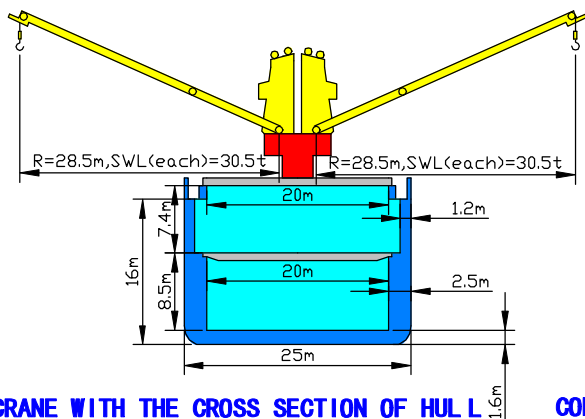
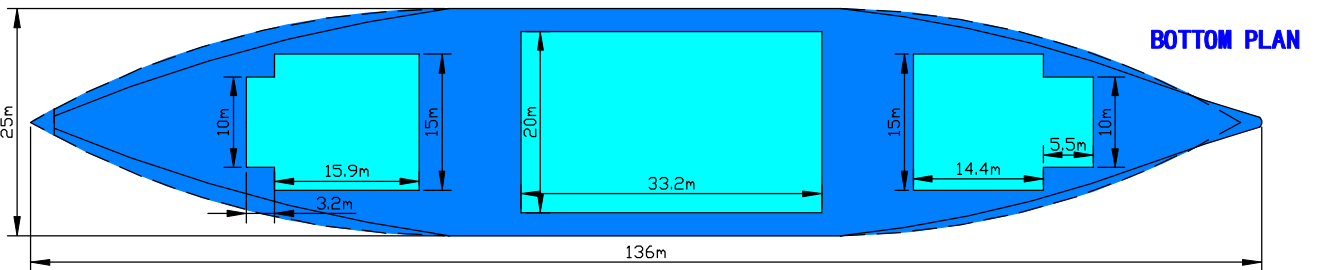
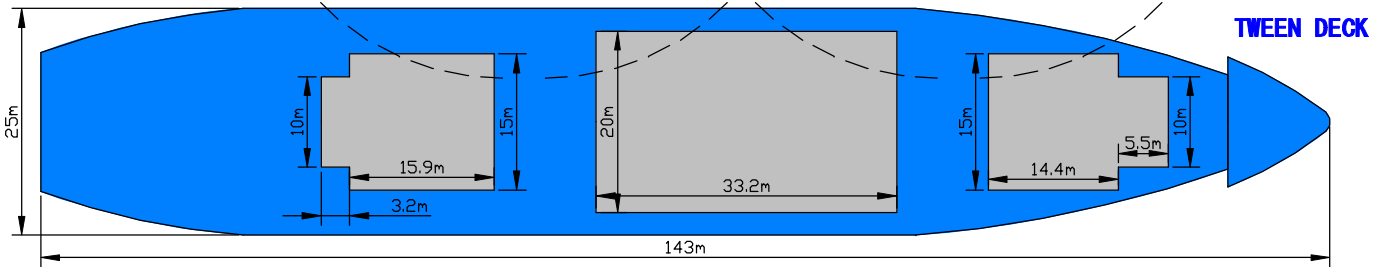
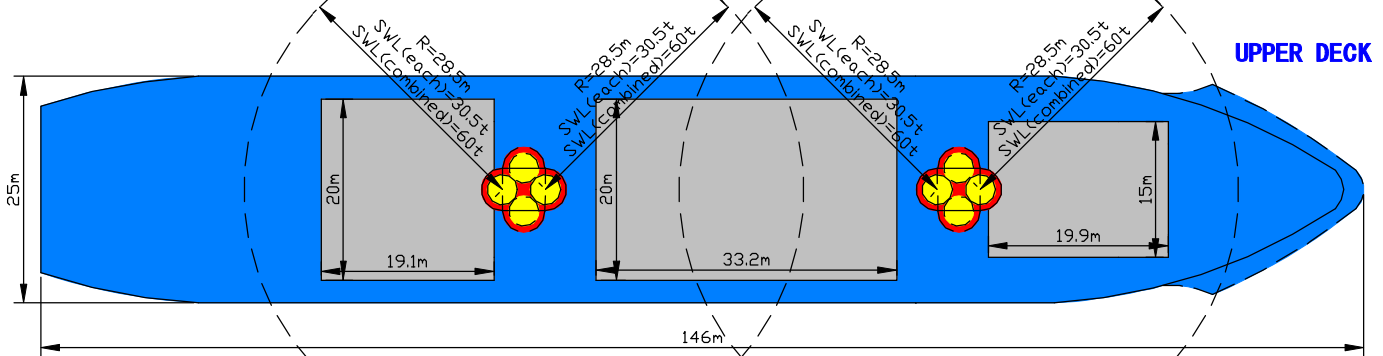
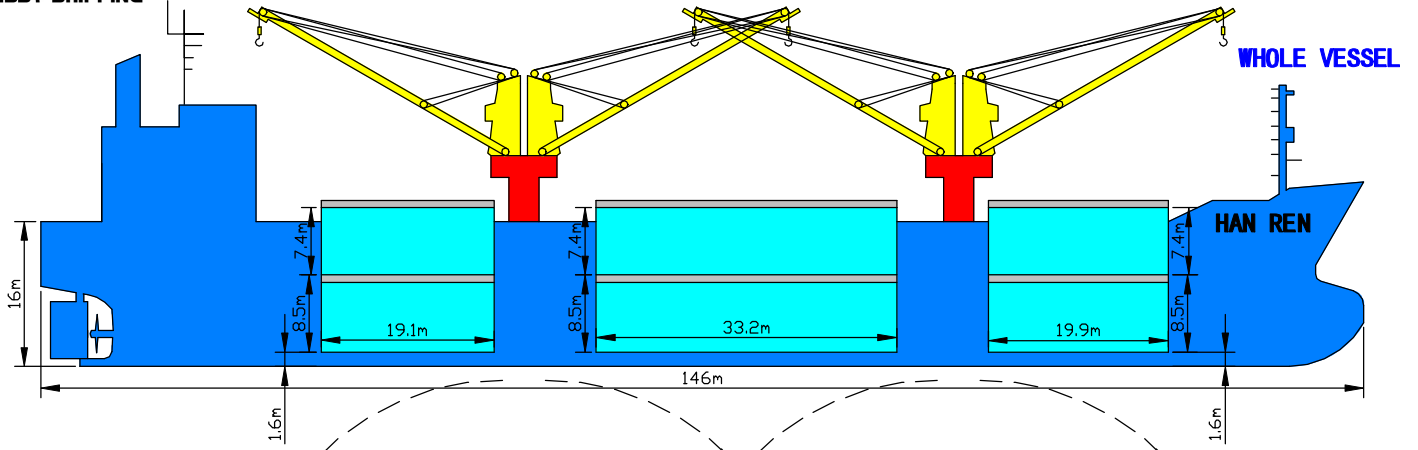
**PRINCIPAL PARTICULARS:**

LOA: 145.5m	DWT: 20106.85mt
LBP: 136m	GRT: 15,608tonnage
BREADTH: 25m	NRT: 6,135tonnage
DEPTH: 16m	LIGHT SHIP: 6222.29mt
DRAFT: 9.769m	CRANES: 4*30.5t, COMBINED UP TO 60t
NO.1 HOLD CAPACITY: 7197.96m <sup>3</sup>	MAX SPEED: 16.3kts
NO.2 HOLD CAPACITY: 14488.17m <sup>3</sup>	SEVICE SPEED: 13.5kts
NO.3 HOLD CAPACITY: 7758.8m <sup>3</sup>	MAIN ENGINE: 5000KW(6800PS)*120/MIN
NO. OF HATCH/HOLD: 3/3	TYPE: B&W 6S42MC7.1
IMO NO.: 9651955	CALL SIGN: VRLK5
FLAG: HONG KONG	TYPE: GENERAL CARGO SHIP
YEAR OF BUILT: 2012	CLASS: NK
PLACE OF BUILT: FUKUOKA SHIPBUILDING CO., LTD NAGASAKI SHIPYARD, JAPAN	

**DETAILS ARE BELIEVED TO BE CORRECT,BUT ARE NOT GUARANTEED**

# M. V. HAN REN (HONG KONG 2012)

HANSY SHIPPING



EACH CRANE WITH THE CROSS SECTION OF HULL

COMBINED CRANE WITH THE CROSS SECTION OF HULL

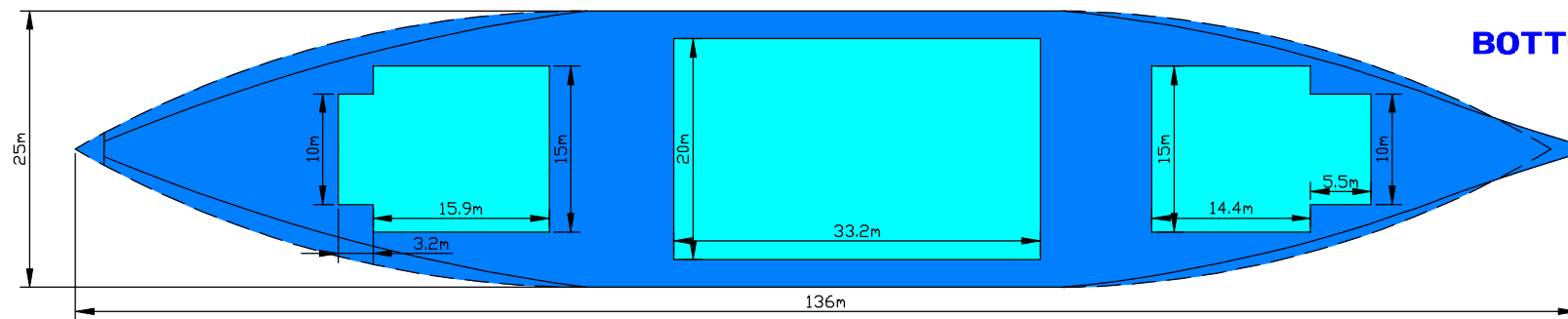
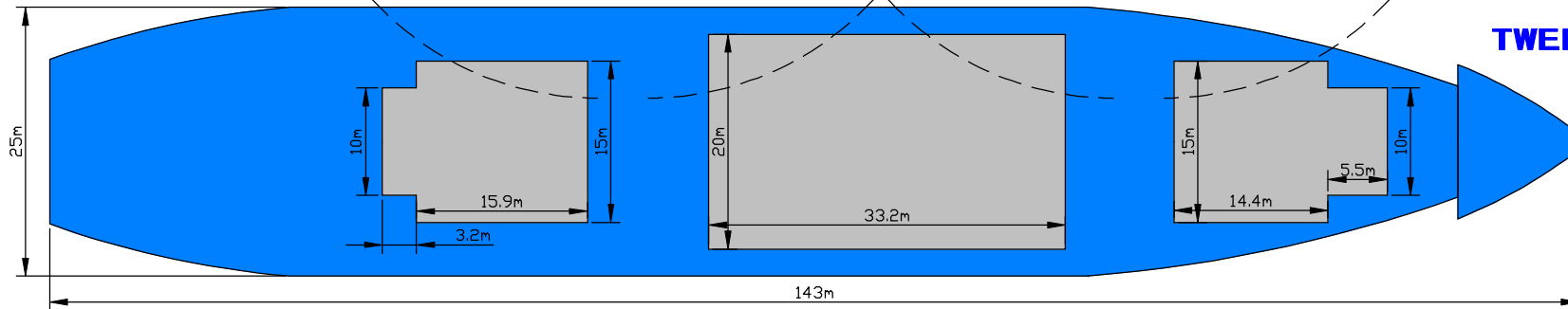
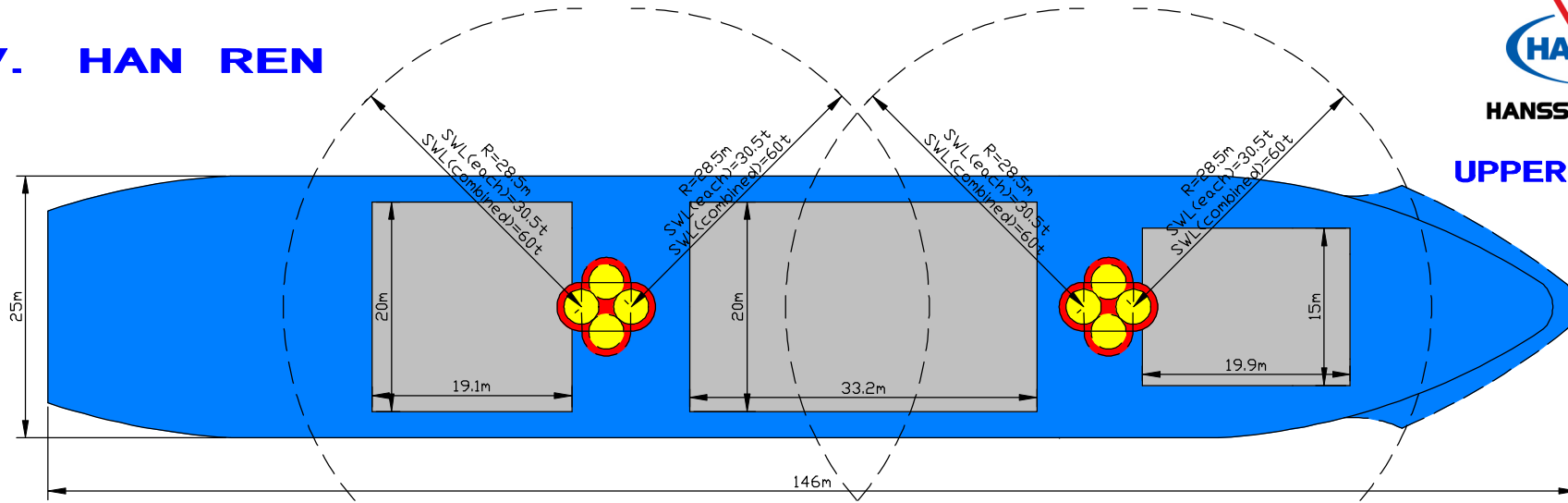
- EACH CRANE
- COMBINED CRANE
- CARGO HATCH OR HATCH COVER
- CARGO HOLD

DRAWING COEFFICIENT: 1.2

# M. V. HAN REN



HANSSY SHIPPING



- EACH CRANE
  - COMBINED CRANE
  - CARGO HATCH OR HATCH COVER
  - CARGO HOLD
- DRAWING COEFFICIENT: 1.5**