



**HANSSY SHIPPING**

**M. V. HAN Y I**

**(SINGAPORE 1998)**

**PRINCIPAL PARTICULARS:**

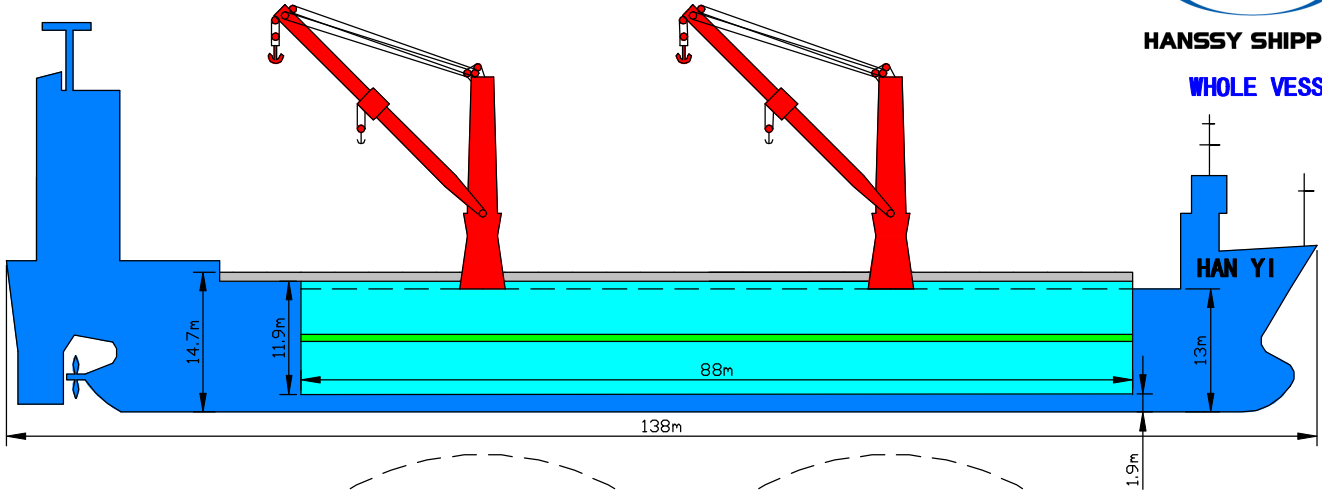
LOA: 138.04m	DWT: 15,593t
LBP: 127.94m	GRT: 10,990t
BREADTH: 22.8m	NRT: 5,041t
DEPTH: 12.95m	LIGHT SHIP: 5398.4t
DRAFT: 9.497m	CRANES: 2*400t, COMBINED UP TO 800t
TEU CONTAINER CAPACITY: 1039	MAX SPEED: 16kts
CAPACITY: 17,863m <sup>3</sup>	MAIN ENGINE: WARTSILLA 9L 46.B 8775kw
IF TWEEN DECK INSTALLED: 16,338m <sup>3</sup>	FUEL OIL TANK CAPACITY: 1200m <sup>3</sup>
NO. OF HATCH/HOLD: 1/1	FRESH WATER TANK CAPACITY: 145m <sup>3</sup>
IMO NO.: 9148116	CALL SIGN: 9V9566
FLAG: SINGAPORE	TYPE: GENERAL CARGO SHIP
YEAR OF BUILT: 1998	CLASS: UK P&I CLUB
PLACE OF BUILT: MERWEDE SHIPYARD NETHERLAND	

**DETAILS ARE BELIEVED TO BE CORRECT, BUT ARE NOT GUARANTEED**

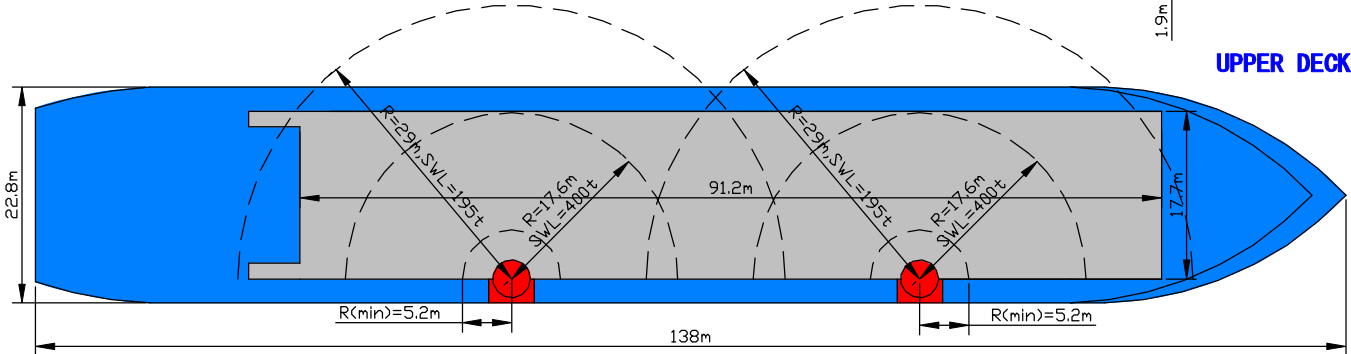
# M. V. HAN YI (SINGAPORE 1998)



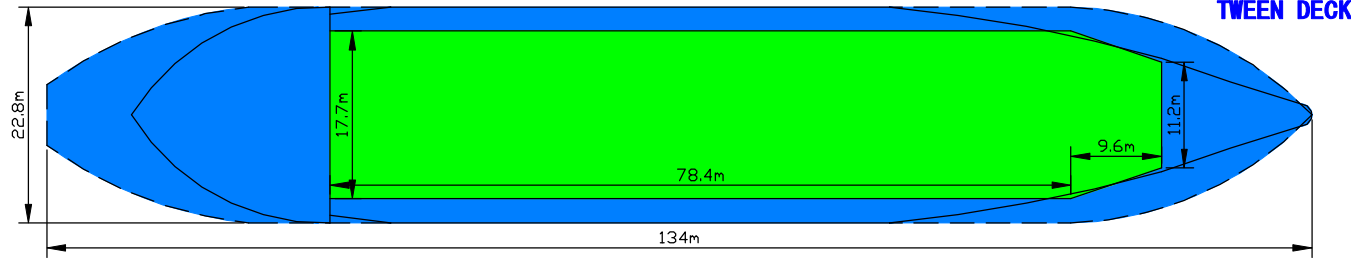
**HANSSY SHIPPING**  
**WHOLE VESSEL**



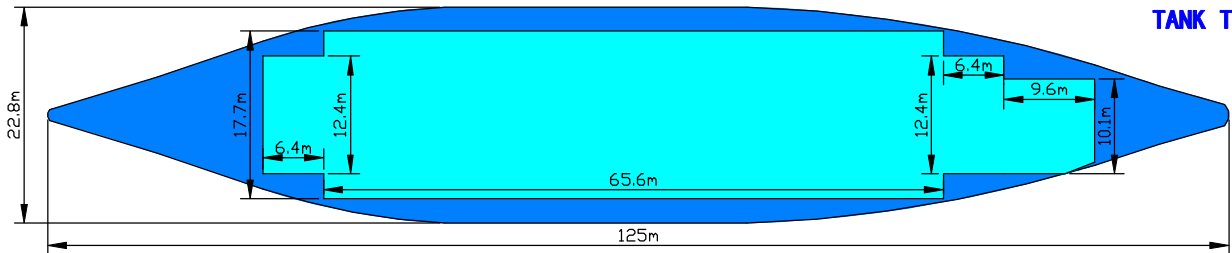
**UPPER DECK**



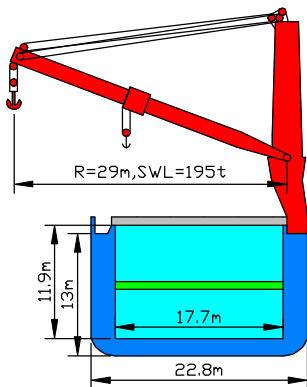
**TWEEN DECK**



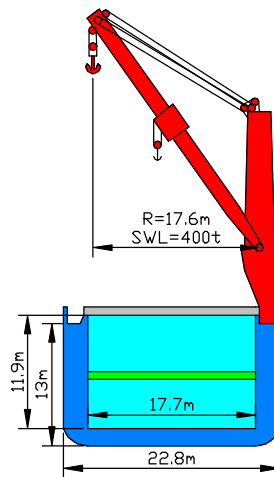
**TANK TOP**



- JUMBO CRANE
- CARGO HATCH OR HATCH COVER
- ADJUSTABLE PANTOON
- CARGO HOLD



**JUMBO CRANE (R=29m, SWL=195t)**  
**OUTREACH WITH THE CROSS SECTION OF HULL**



**JUMBO CRANE (R=17.6m, SWL=400t)**  
**OUTREACH WITH THE CROSS SECTION OF HULL**

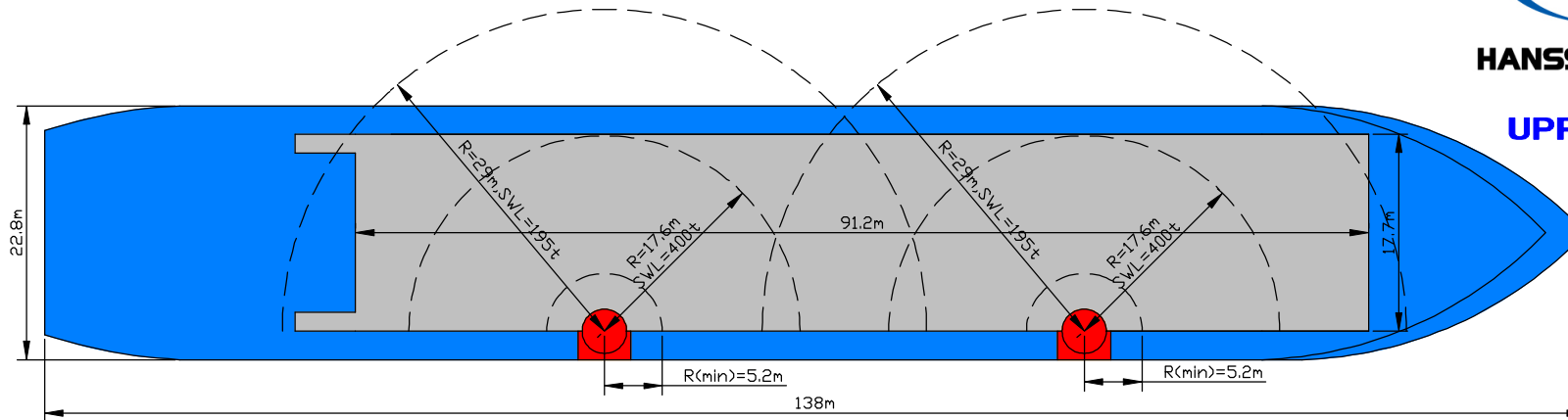
**DRAWING COEFFICIENT: 1.25**

# M. V. HAN YI (SINGAPORE 1998)

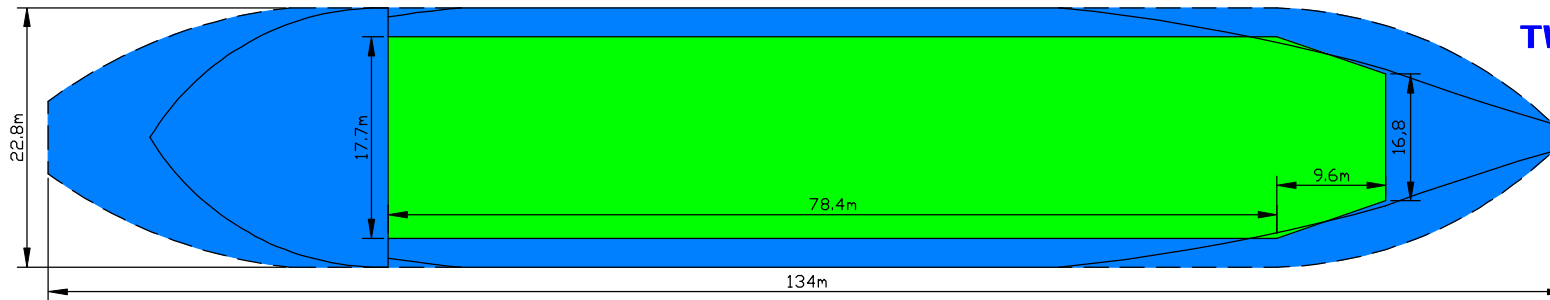


**HANSSY SHIPPING**

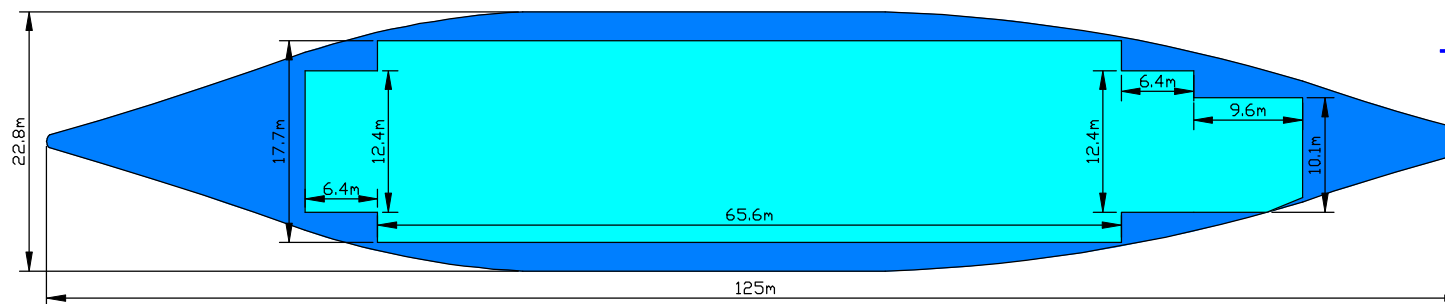
**UPPER DECK**



**TWEEN DECK**



**TANK TOP**



- JUMBO CRANE**     **CARGO HATCH OR HATCH COVER**
- ADJUSTABLE PANTOON**     **CARGO HOLD**

**DRAWING COEFFICIENT: 1.5**