



**HANSSY SHIPPING**

**M. V. HAN ZHI**  
**(SINGAPORE 1996)**  
**M. V. HAN XIN**  
**(HONG KONG 1996)**

**PRINCIPAL PARTICULARS:**

LOA: 107.43m	DWT: 7,770mt
LBP: 98.60m	GRT: 5,800mt
BREADTH: 19.00m	NRT: 3,150mt
DEPTH: 10.60m	LIGHT SHIP: 4,200mt
DRAFT: 8.29m	CRANES: 2*250t, COMBINED UP TO 500t
TEU CONTAINER CAPACITY: 457	ECONOMIC SPEED: 13knts
BALE CAPACITY: 9,647m <sup>3</sup>	MAIN ENGINE: MAN TYPE 7L 40/54
GRAIN CAPACITY: 9,660m <sup>3</sup>	AUXILIARY ENGINE: VOLVO TAMD 1626
NO. OF HATCH/HOLD: 1/1	TRIAL SPEED: 15knts

IMO NO.: HAN ZHI 9125877

IMO NO.: HAN XIN 9125889

FLAG: HAN ZHI SINGAPORE

FLAG: HAN XIN HONG KONG

YEAR OF BUILT: 1996

CLASS: GL

PLACE OF BUILT: J J SIETAS KG  
 SCHIFFSWERFT GMBH U. CO.  
 HAMBURG, DEUTSCHLAND

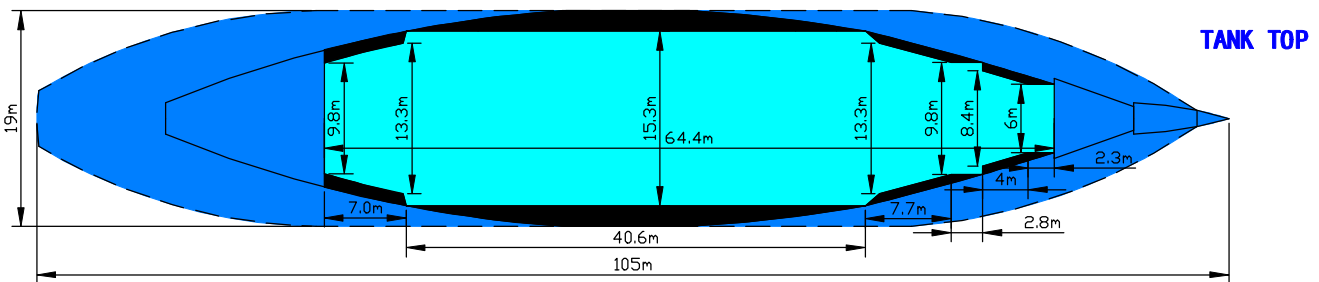
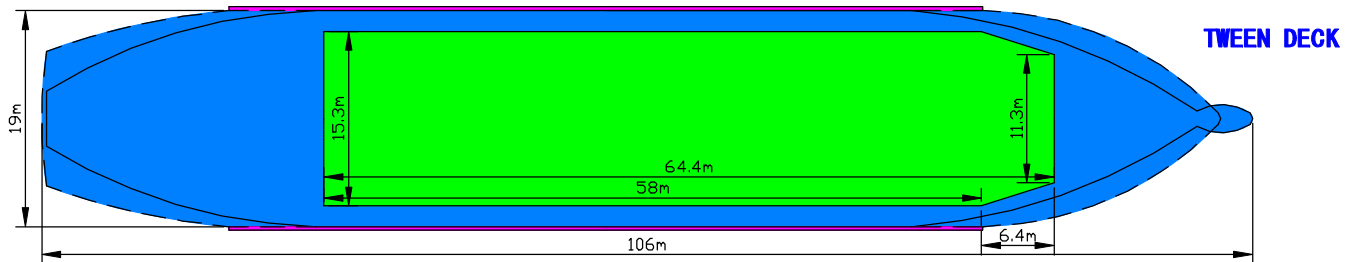
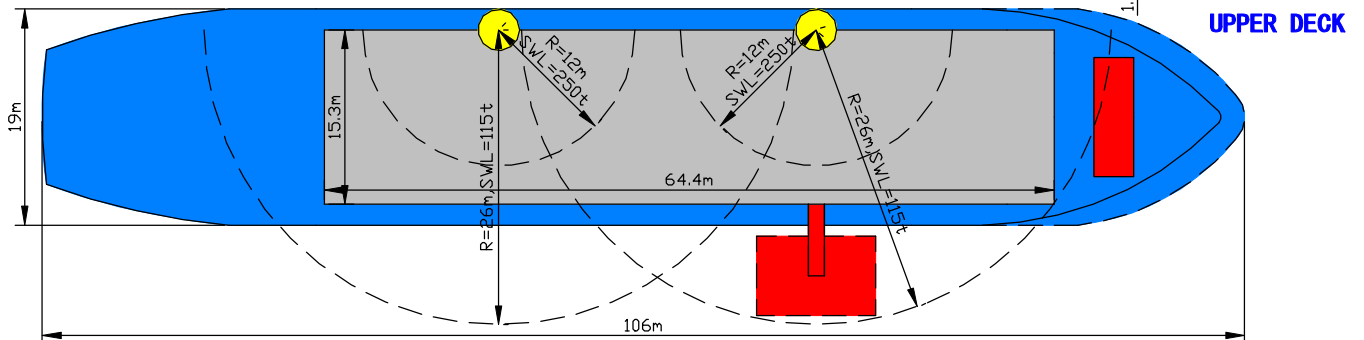
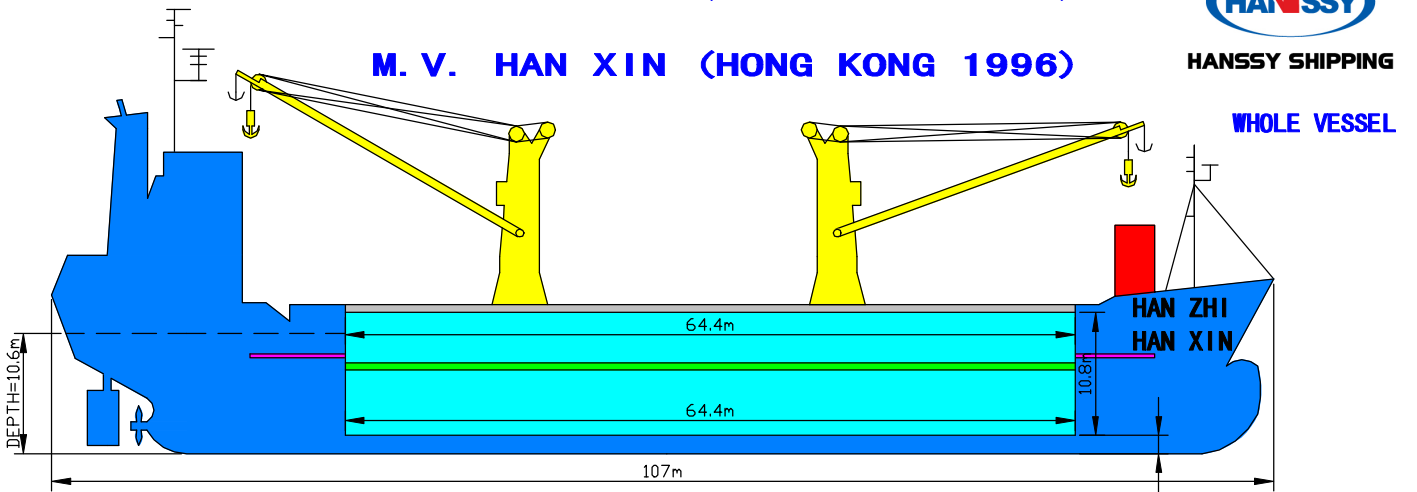
**DETAILS ARE BELIEVED TO BE CORRECT, BUT ARE NOT GUARANTEED**

M. V. HAN ZHI (SINGAPORE 1996)

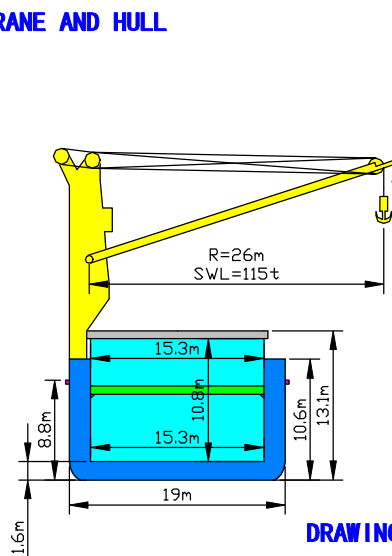
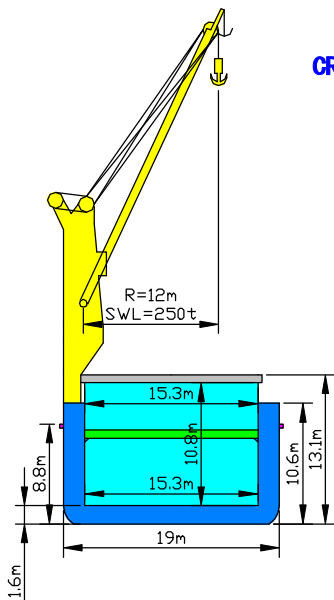
M. V. HAN XIN (HONG KONG 1996)



HANSSY SHIPPING



CROSS SECTION OF CRANE AND HULL



- CRANE
- TANK
- HATCH OR HATCH COVER
- CARGO HOLD
- ADJUSTABLE PONTOON DECK
- PONTOON  
(INSERT THE WATER, BALANCE THE HEAVY LIFT)
- ANTICOLLISION BEAM  
(AVOID DAMAGE IF VESSEL COLLIDE VESSEL)

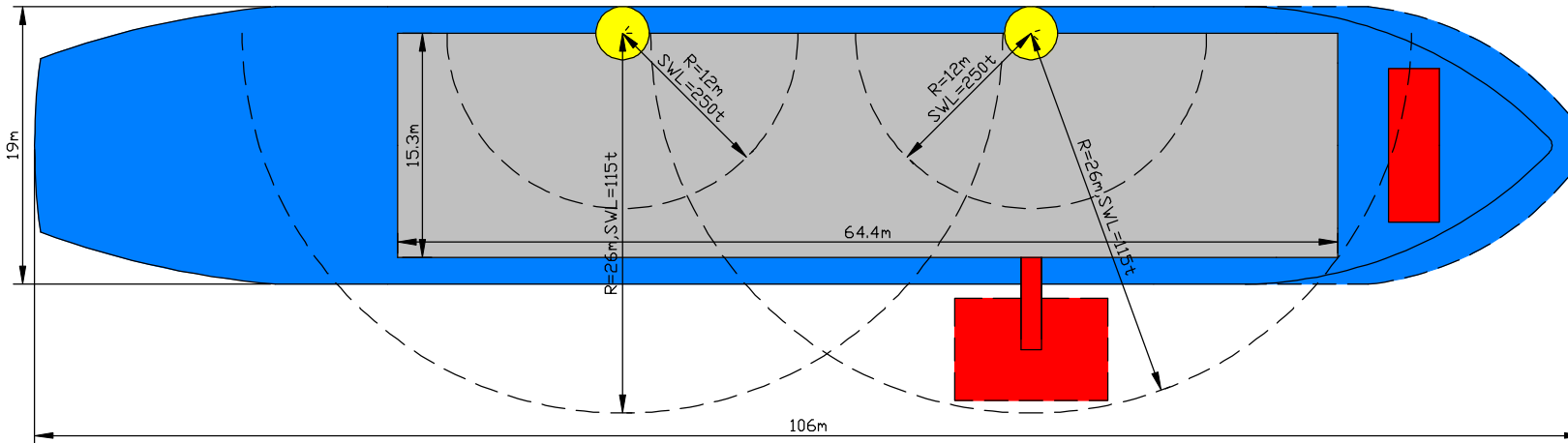
DRAWING COEFFICIENT: 1.5

M. V. HAN ZHI (SINGAPORE 1996) / M. V. HAN XIN (HONG KONG 1996)

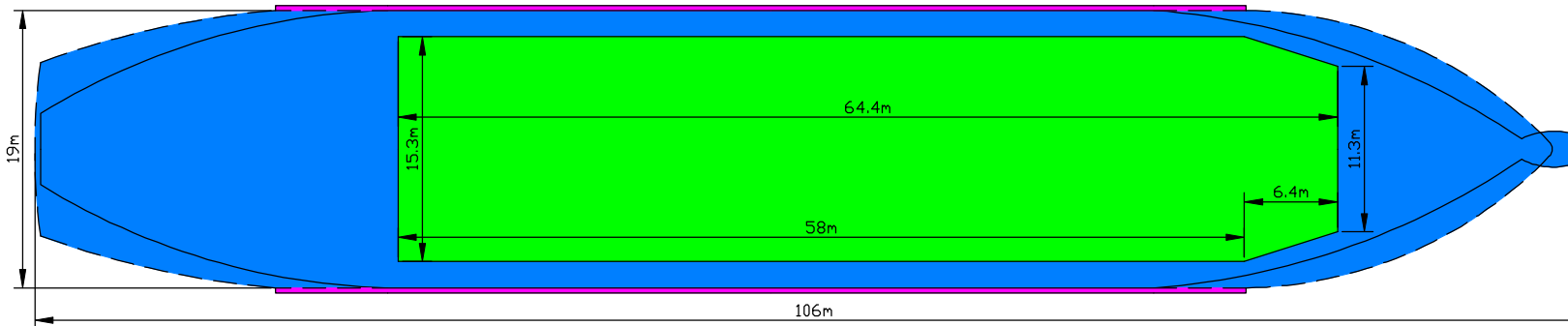


HANSSY SHIPPING

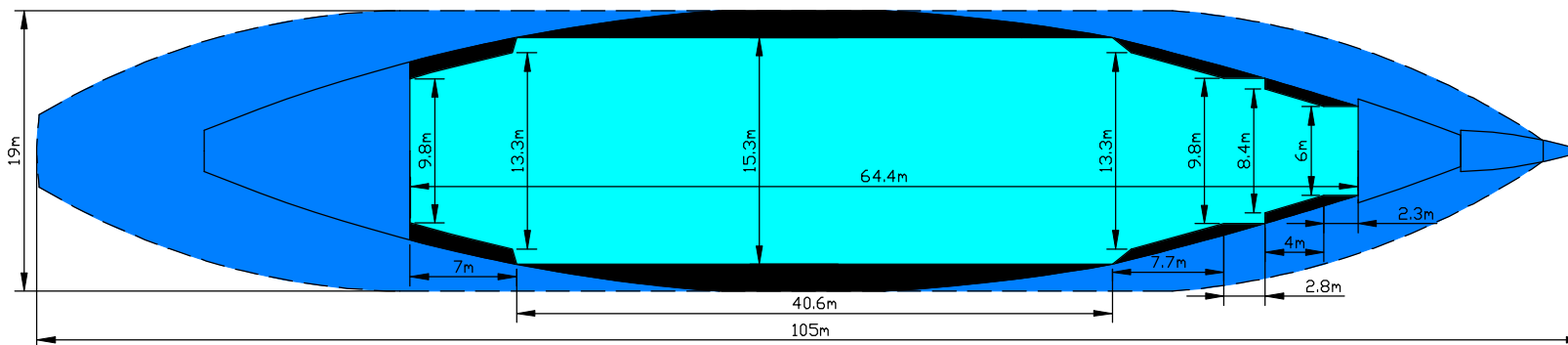
UPPER  
DECK



TWEEN  
DECK



TANK  
TOP



- CRANE
- TANK
- HATCH OR HATCH COVER
- CARGO HOLD
- ADJUSTABLE PONTOON DECK
- PONTOON (INSERT THE WATER, BALANCE THE HEAVYLIFT)
- ANTICOLLISION BEAM (AVOID DAMAGE IF VESSEL COLLIDE VESSEL)

DRAWING COEFFICIENT: 2